

IES Report

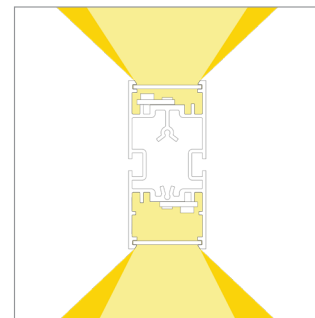
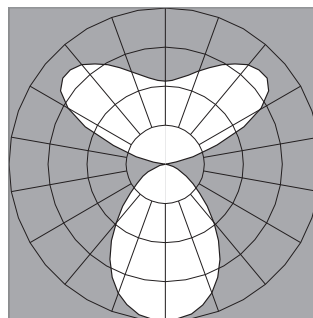
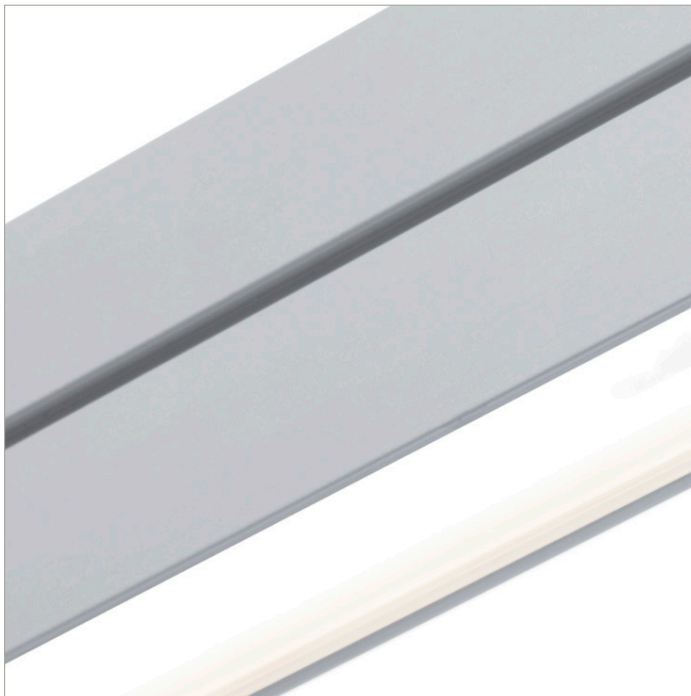
DoubleBox™ | 107 | Wide Batwing, up | Diffuse, down | 80 CRI | LO

107-DB-XX-4-48-XX-XX-XX-XX-X-X-Z-LO-35-G12-X-XX-X

	2700K	3000K	3500K	4000K
Efficacy - Lumens per Watt	101	104	106	106
Total Lumens, 4' rail length (1219mm)	2771	2858	2917	2917
Lumens per foot (305mm)	693	715	729	729
Lumens per foot UP (305mm)	371	383	391	391
Lumens per foot DOWN (305mm)	321	332	338	338
Input Power (W), 4' rail length (1219mm)	27.6	27.6	27.6	27.6
Watts per foot (305mm)	6.9	6.9	6.9	6.9
CRI	82	82	82	82

Due to the large number of options in Vode's product offering, most Vode IES reports are factored reports prepared from source reports. Source reports are the IES test reports prepared for Vode by an NVLAP accredited photometric test laboratory. Factored reports are based on data from the Vode source reports.

If the data above is in black, it is directly from a Vode source report. If it is in grey, it is factored from Vode source reports. Reference details on Vode source reports can be found on the [IES File Finder](#) page on [vode.com](#).



IES Report

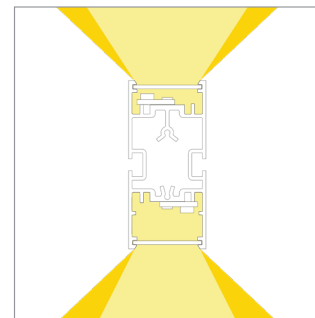
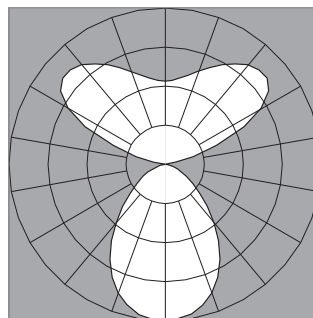
DoubleBox™ | 107 | Wide Batwing, up | Diffuse, down | 80 CRI | SO

107-DB-XX-4-48-XX-XX-XX-XX-X-X-Z-SO-35-G12-X-XX-X

	2700K	3000K	3500K	4000K
Efficacy - Lumens per Watt	116	120	122	122
Total Lumens, 4' rail length (1219mm)	5542	5717	5834	5834
Lumens per foot (305mm)	1385	1429	1458	1458
Lumens per foot UP (305mm)	743	766	782	782
Lumens per foot DOWN (305mm)	643	663	677	677
Input Power (W), 4' rail length (1219mm)	47.8	47.8	47.8	47.8
Watts per foot (305mm)	12.0	12.0	12.0	12.0
CRI	82	82	82	82

Due to the large number of options in Vode's product offering, most Vode IES reports are factored reports prepared from source reports. Source reports are the IES test reports prepared for Vode by an NVLAP accredited photometric test laboratory. Factored reports are based on data from the Vode source reports.

If the data above is in black, it is directly from a Vode source report. If it is in grey, it is factored from Vode source reports. Reference details on Vode source reports can be found on the [IES File Finder](#) page on [vode.com](#).



IES Report

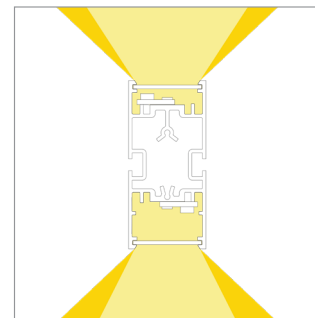
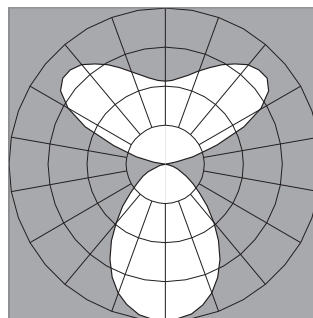
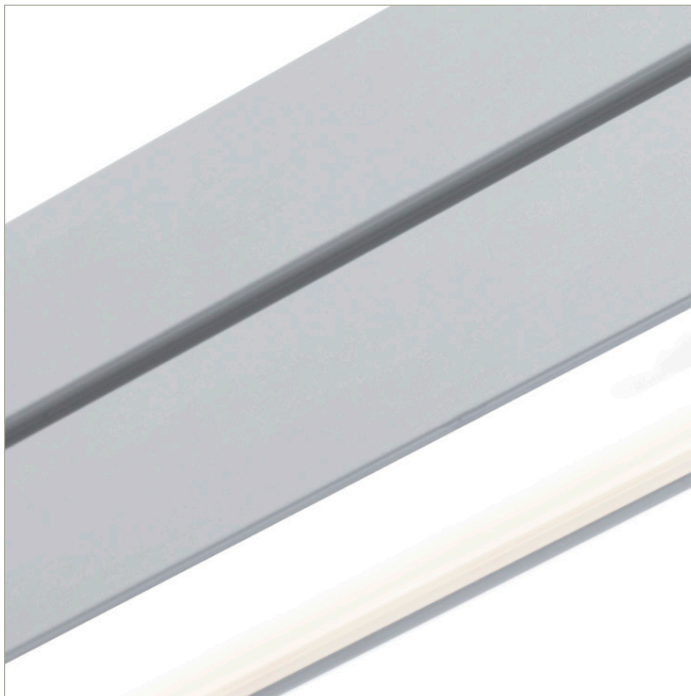
DoubleBox™ | 107 | Wide Batwing, up | Diffuse, down | 80 CRI | HO

107-DB-XX-4-48-XX-XX-XX-XX-X-X-Z-HO-35-G12-X-XX-X

	2700K	3000K	3500K	4000K
Efficacy - Lumens per Watt	108	111	113	113
Total Lumens, 4' rail length (1219mm)	10530	10862	11084	11084
Lumens per foot (305mm)	2632	2716	2771	2771
Lumens per foot UP (305mm)	1411	1456	1485	1485
Lumens per foot DOWN (305mm)	1221	1260	1285	1285
Input Power (W), 4' rail length (1219mm)	98.1	98.1	98.1	98.1
Watts per foot (305mm)	24.6	24.6	24.6	24.6
CRI	82	82	82	82

Due to the large number of options in Vode's product offering, most Vode IES reports are factored reports prepared from source reports. Source reports are the IES test reports prepared for Vode by an NVLAP accredited photometric test laboratory. Factored reports are based on data from the Vode source reports.

If the data above is in black, it is directly from a Vode source report. If it is in grey, it is factored from Vode source reports. Reference details on Vode source reports can be found on the [IES File Finder](#) page on [vode.com](#).



IES Report

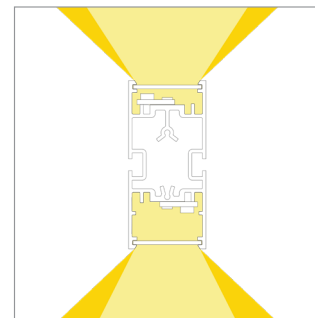
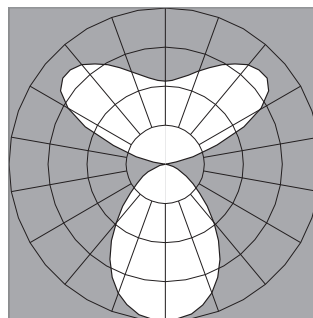
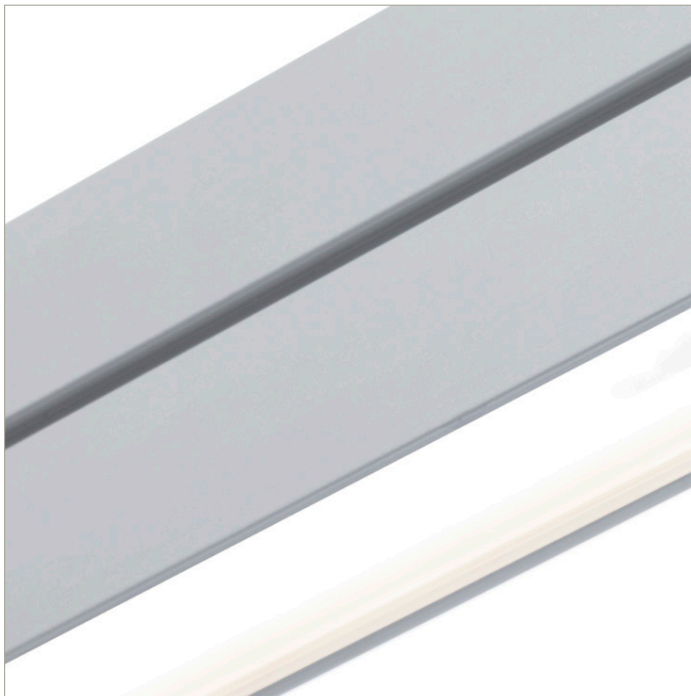
DoubleBox™ | 107 | Wide Batwing, up | Diffuse, down | 90 CRI | LO

107-DB-XX-4-48-XX-XX-XX-XX-X-X-Z-LO-359-G12-X-XX-X

	2700K	3000K	3500K	4000K
Efficacy - Lumens per Watt	87	90	92	93
Total Lumens, 4' rail length (1219mm)	2389	2464	2515	2540
Lumens per foot (305mm)	597	616	629	635
Lumens per foot UP (305mm)	320	330	337	340
Lumens per foot DOWN (305mm)	277	286	292	295
Input Power (W), 4' rail length (1219mm)	27.6	27.6	27.6	27.6
Watts per foot (305mm)	6.9	6.9	6.9	6.9
CRI	94	94	94	94

Due to the large number of options in Vode's product offering, most Vode IES reports are factored reports prepared from source reports. Source reports are the IES test reports prepared for Vode by an NVLAP accredited photometric test laboratory. Factored reports are based on data from the Vode source reports.

If the data above is in black, it is directly from a Vode source report. If it is in grey, it is factored from Vode source reports. Reference details on Vode source reports can be found on the [IES File Finder](#) page on [vode.com](#).



IES Report

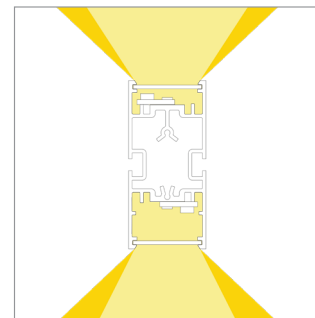
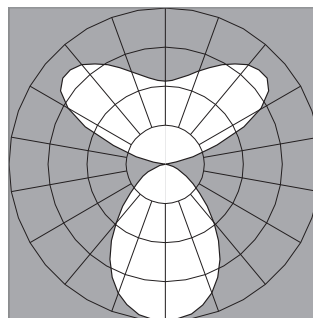
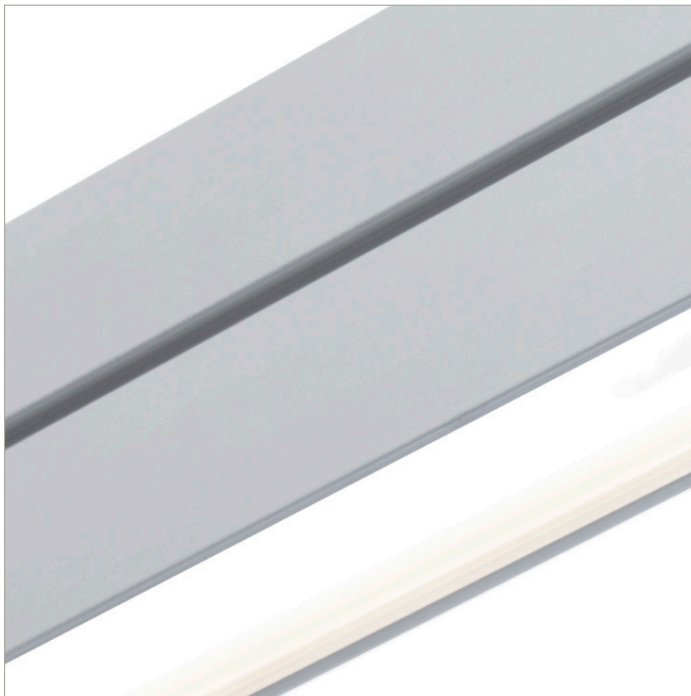
DoubleBox™ | 107 | Wide Batwing, up | Diffuse, down | 90 CRI | SO

107-DB-XX-4-48-XX-XX-XX-XX-X-X-Z-SO-359-G12-X-XX-X

	2700K	3000K	3500K	4000K
Efficacy - Lumens per Watt	100	104	106	107
Total Lumens, 4' rail length (1219mm)	4778	4928	5029	5079
Lumens per foot (305mm)	1194	1232	1257	1270
Lumens per foot UP (305mm)	640	660	674	681
Lumens per foot DOWN (305mm)	554	572	583	589
Input Power (W), 4' rail length (1219mm)	47.8	47.8	47.8	47.8
Watts per foot (305mm)	12.0	12.0	12.0	12.0
CRI	94	94	94	94

Due to the large number of options in Vode's product offering, most Vode IES reports are factored reports prepared from source reports. Source reports are the IES test reports prepared for Vode by an NVLAP accredited photometric test laboratory. Factored reports are based on data from the Vode source reports.

If the data above is in black, it is directly from a Vode source report. If it is in grey, it is factored from Vode source reports. Reference details on Vode source reports can be found on the [IES File Finder](#) page on [vode.com](#).



IES Report

DoubleBox™ | 107 | Wide Batwing, up | Diffuse, down | 90 CRI | HO

107-DB-XX-4-48-XX-XX-XX-XX-X-X-Z-HO-359-G12-X-XX-X

	2700K	3000K	3500K	4000K
Efficacy - Lumens per Watt	93	96	98	99
Total Lumens, 4' rail length (1219mm)	9077	9364	9555	9651
Lumens per foot (305mm)	2269	2341	2389	2413
Lumens per foot UP (305mm)	1216	1255	1281	1293
Lumens per foot DOWN (305mm)	1053	1086	1108	1119
Input Power (W), 4' rail length (1219mm)	98.1	98.1	98.1	98.1
Watts per foot (305mm)	24.6	24.6	24.6	24.6
CRI	94	94	94	94

Due to the large number of options in Vode's product offering, most Vode IES reports are factored reports prepared from source reports. Source reports are the IES test reports prepared for Vode by an NVLAP accredited photometric test laboratory. Factored reports are based on data from the Vode source reports.

If the data above is in black, it is directly from a Vode source report. If it is in grey, it is factored from Vode source reports. Reference details on Vode source reports can be found on the [IES File Finder](#) page on [vode.com](#).